

Innovative Tax Planning



Setting up the plan is straightforward and it completely removes the potential for any additional tax.

It is available to businesses that have over £75,000 of surplus cash held in a UK bank and are controlled by between 1 and 11 directors.

WHAT YOU CAN DO

Build your wealth & protect your family legacy



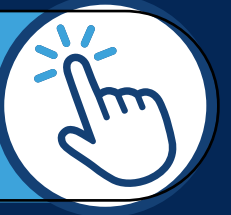
Reduce your Corporation Tax from 25% to 0%



Create a property portfolio from a LTD company



Reduce your Inheritance Tax from 40% to 0%



Book Your
FREE
Consultation

Book a free 15 Minute consultation with one of our Experts.

- Find out if your business is ready
- Talk through your strategy
- Take control of your future

GET IT RIGHT, WITH TLPI

How We Help

- HMRC and The Pensions Regulator correspondence
- Accounting and returns for your structure
- Dedicated compliance team
- Strategy, planning, outcomes
- Preparation of documents
- Minimise paperwork
- Long-term support

Our Expertise

- Highly experienced in property development, tax & business strategy
- We establish and register your plan, trusts & private bank account
- Trusted by over 1,000 successful limited company owners
- Helping you take control, protect and grow your wealth
- Helping business owners since 2004
- Registered pension administrator
- Support is included in the costs
- Dedicated consultant

